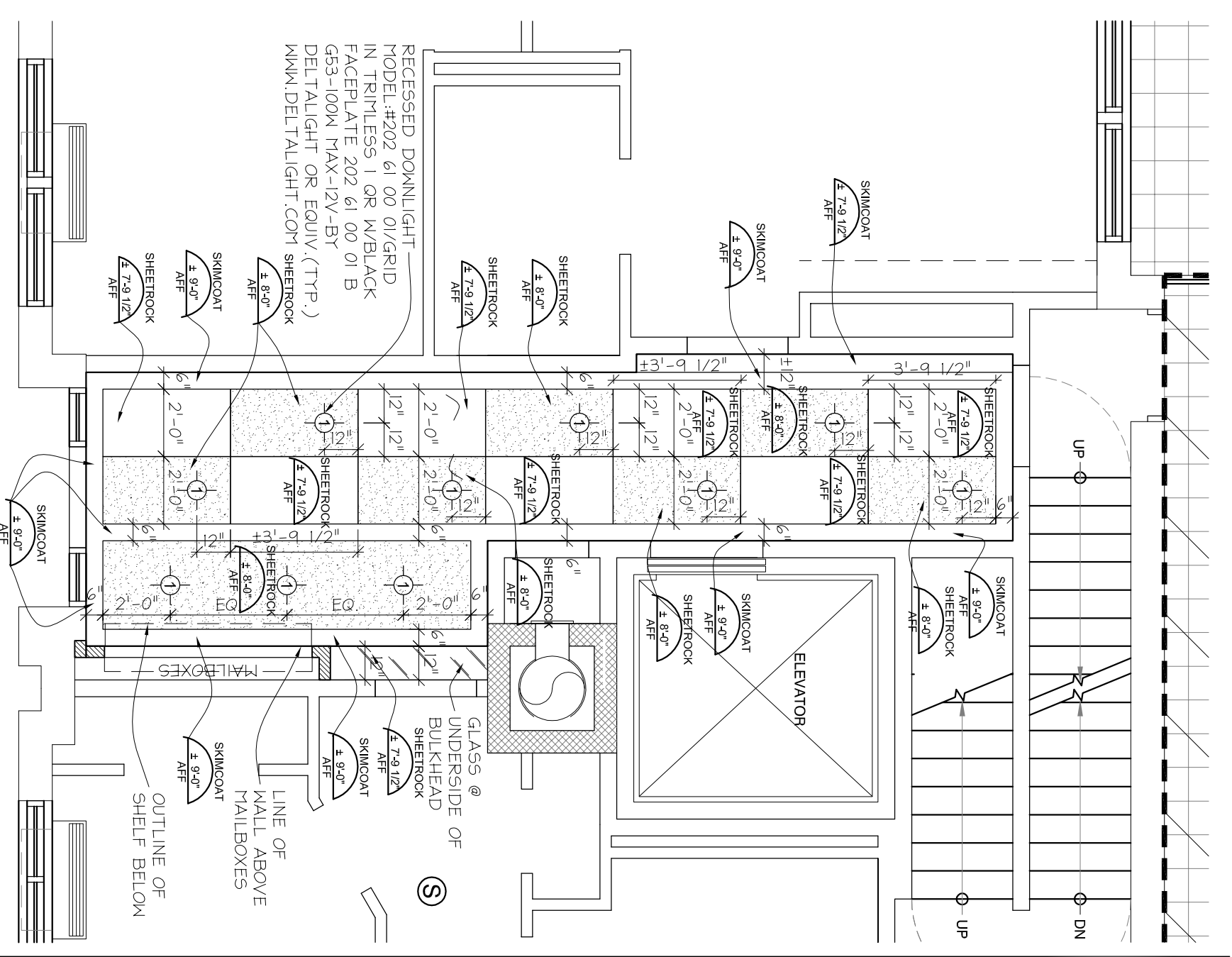
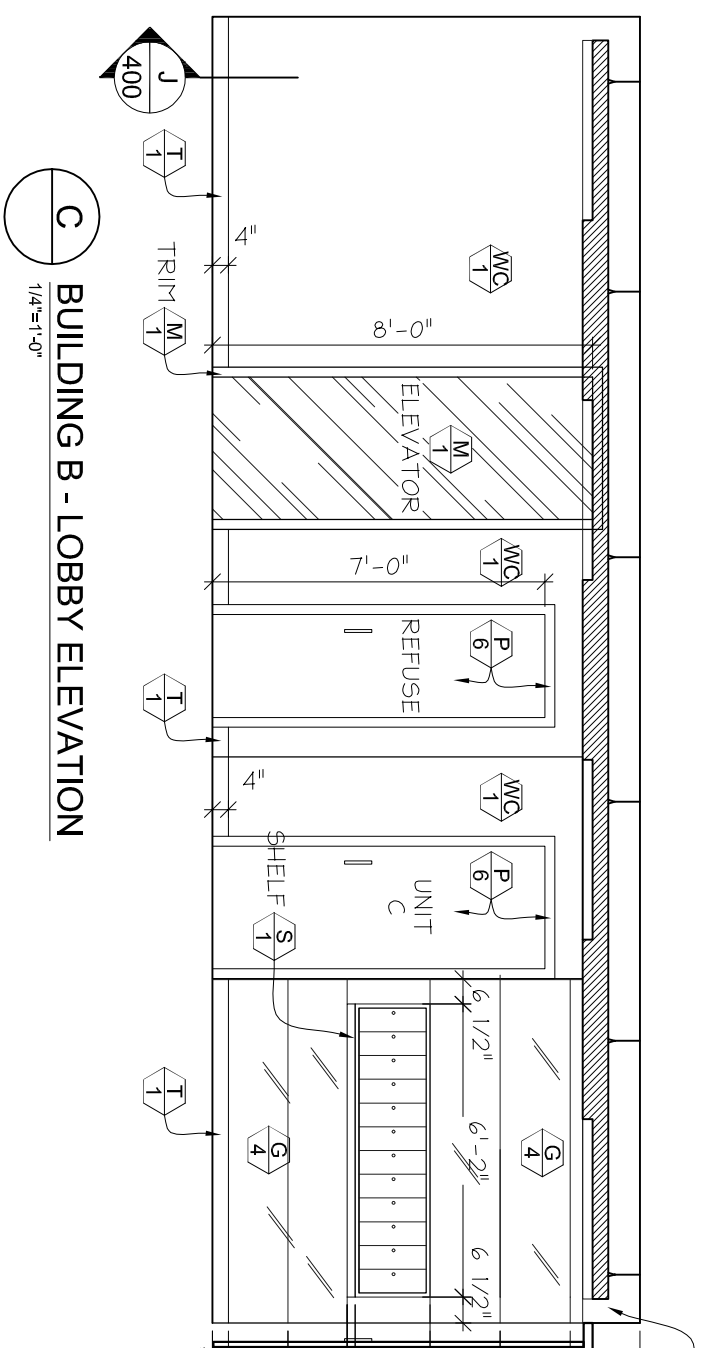


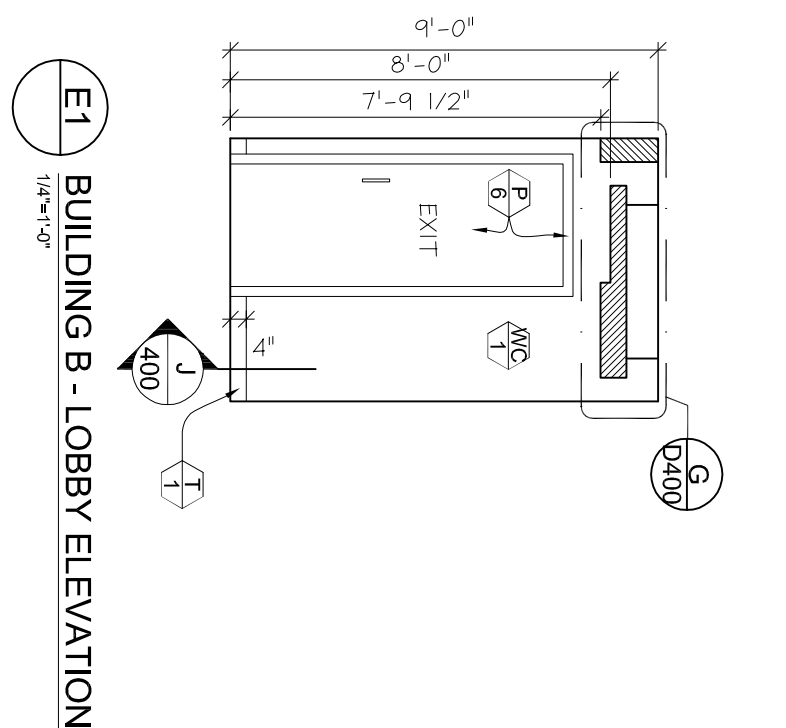
A BUILDING B - LOBBY LAYOUT PLAN
1/4" = 1'-0"



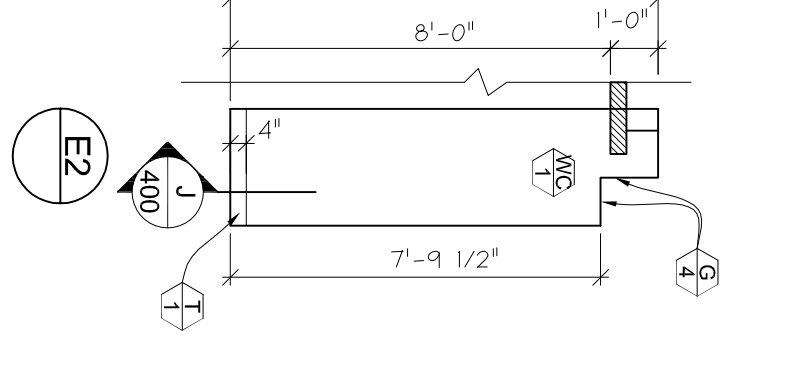
B BUILDING B - LOBBY REFLECTED CEILING PLAN
1/4" = 1'-0"



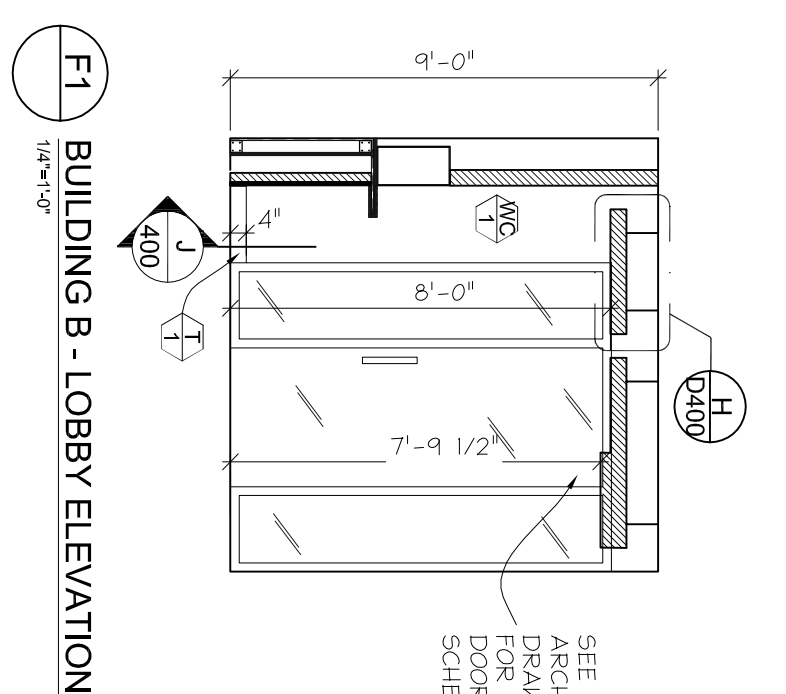
C BUILDING B - LOBBY ELEVATION
1/8" = 1'-0"



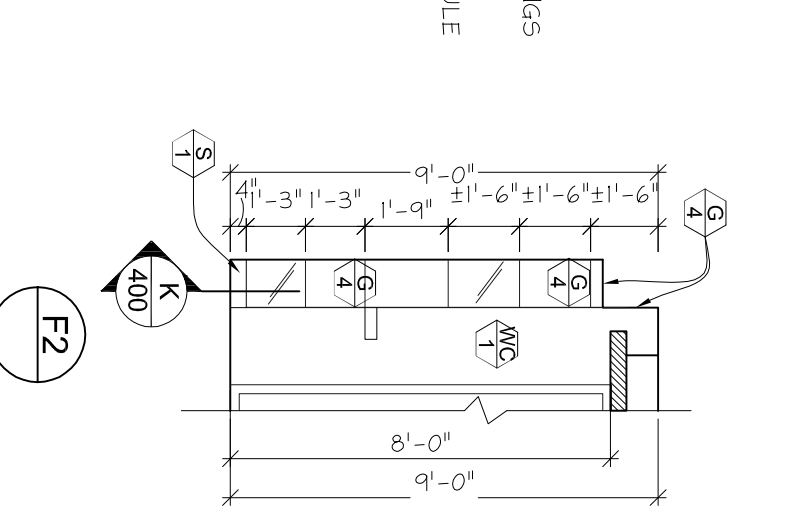
E1 BUILDING B - LOBBY ELEVATION
1/4" = 1'-0"



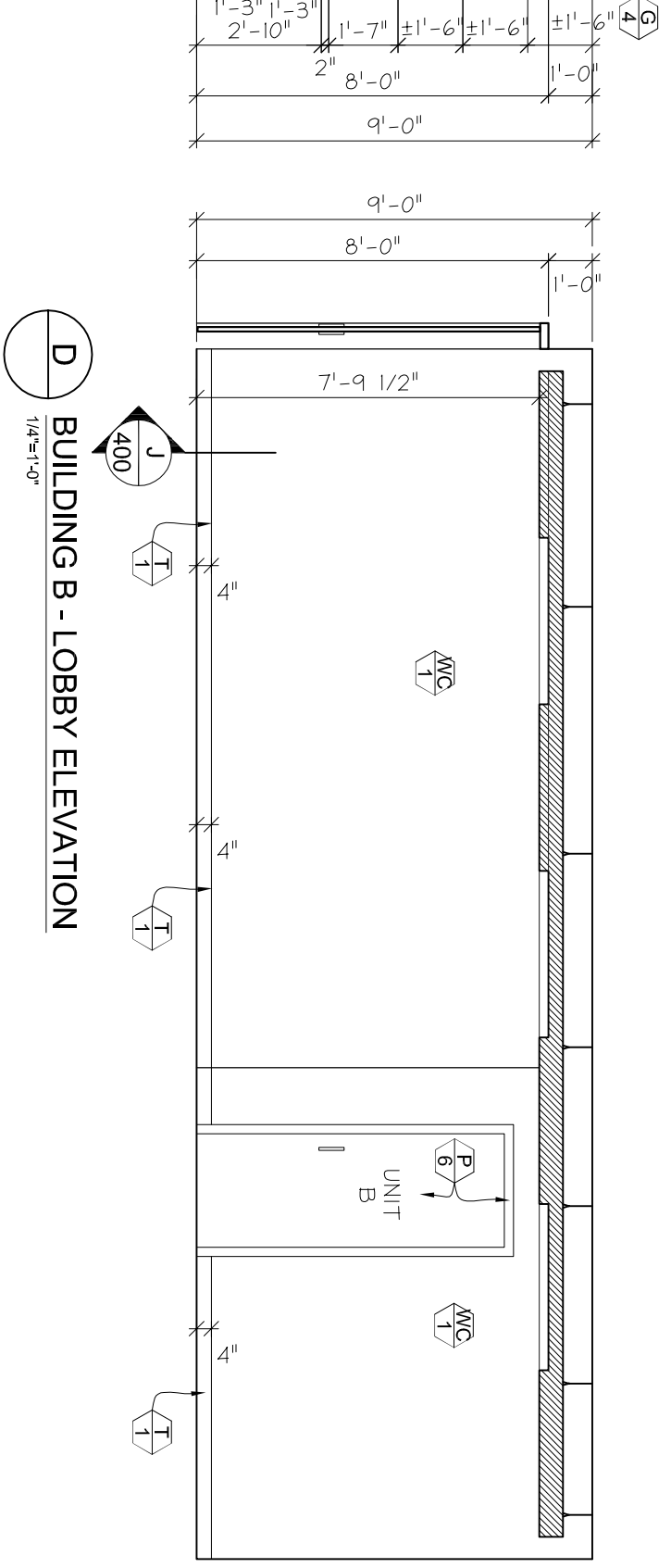
E2 BUILDING B - LOBBY ELEVATION
1/4" = 1'-0"



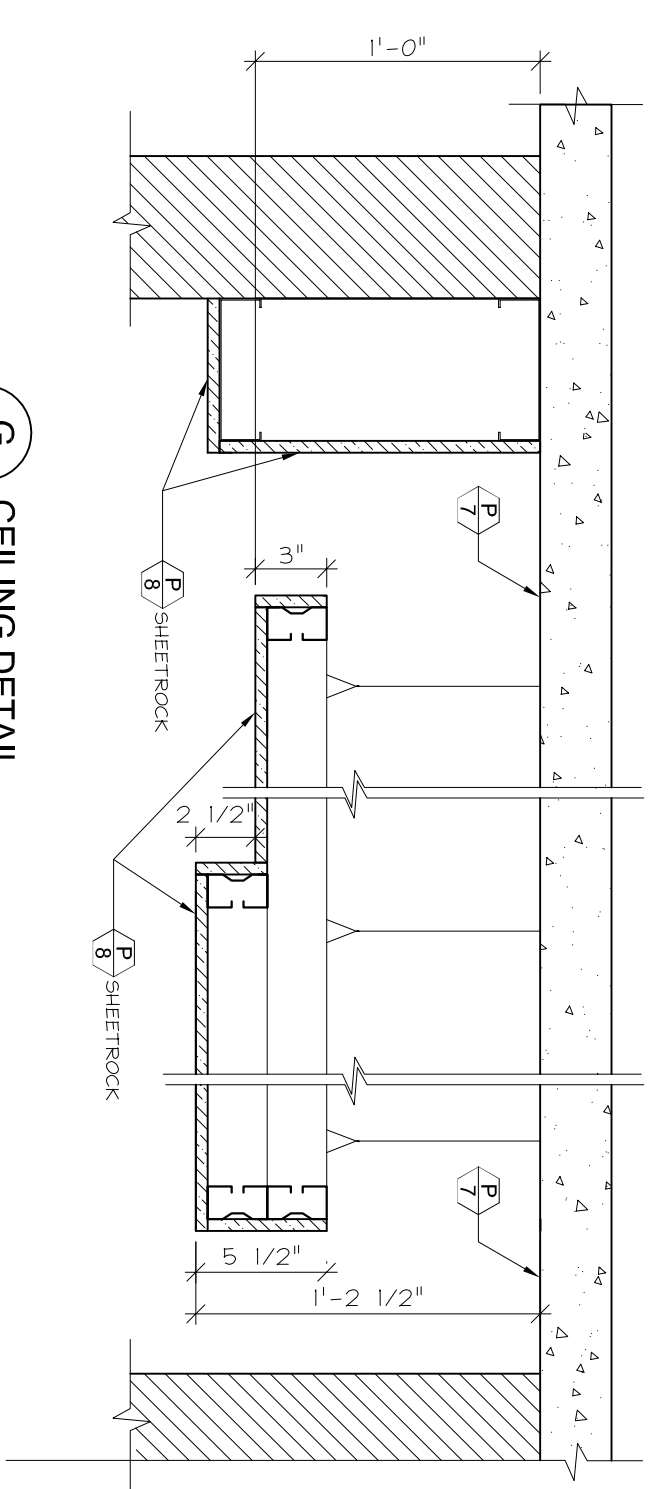
F1 BUILDING B - LOBBY ELEVATION
1/4" = 1'-0"



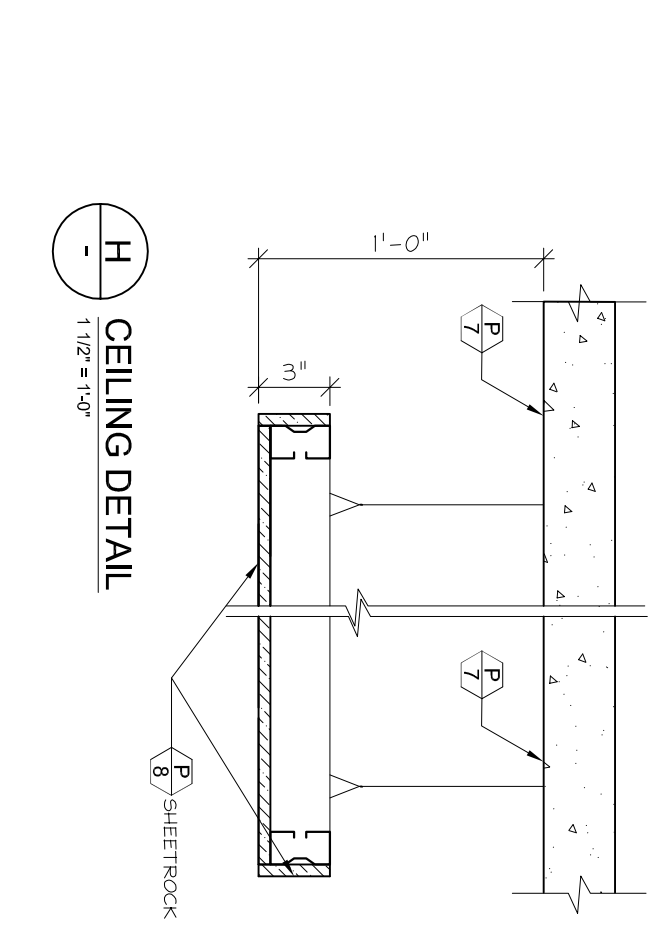
F2 BUILDING B - LOBBY ELEVATION
1/4" = 1'-0"



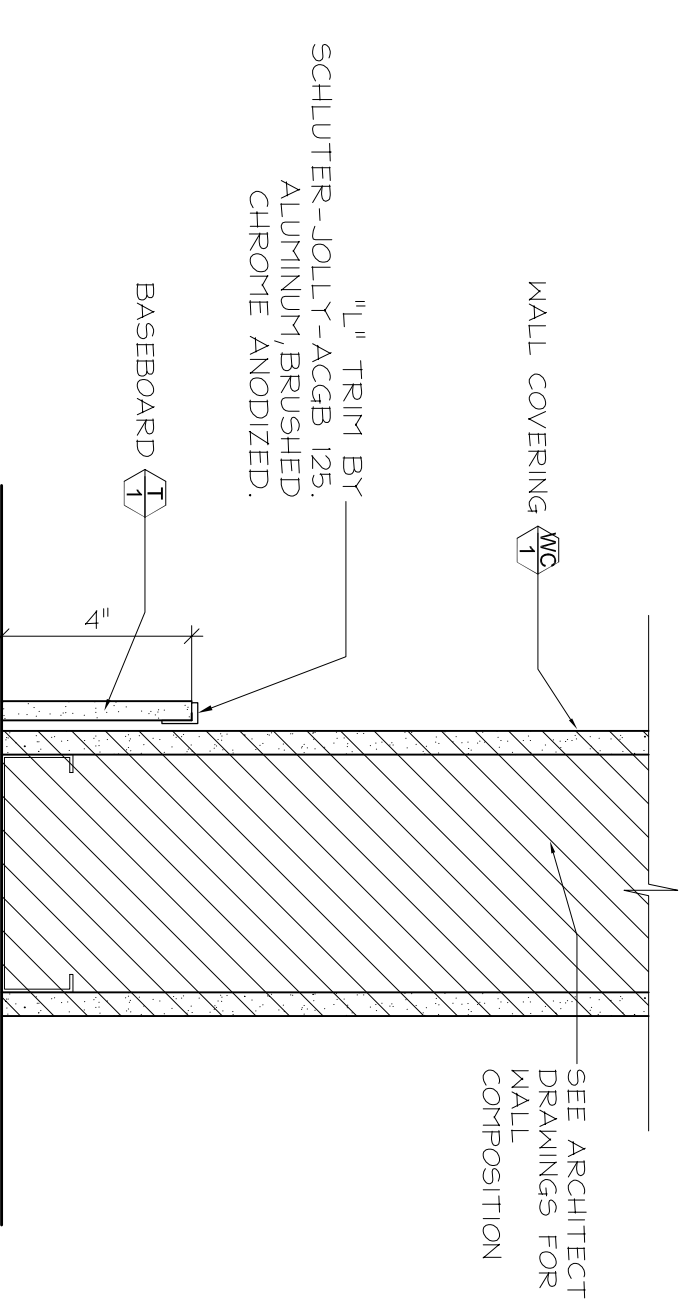
D BUILDING B - LOBBY ELEVATION
1/8" = 1'-0"



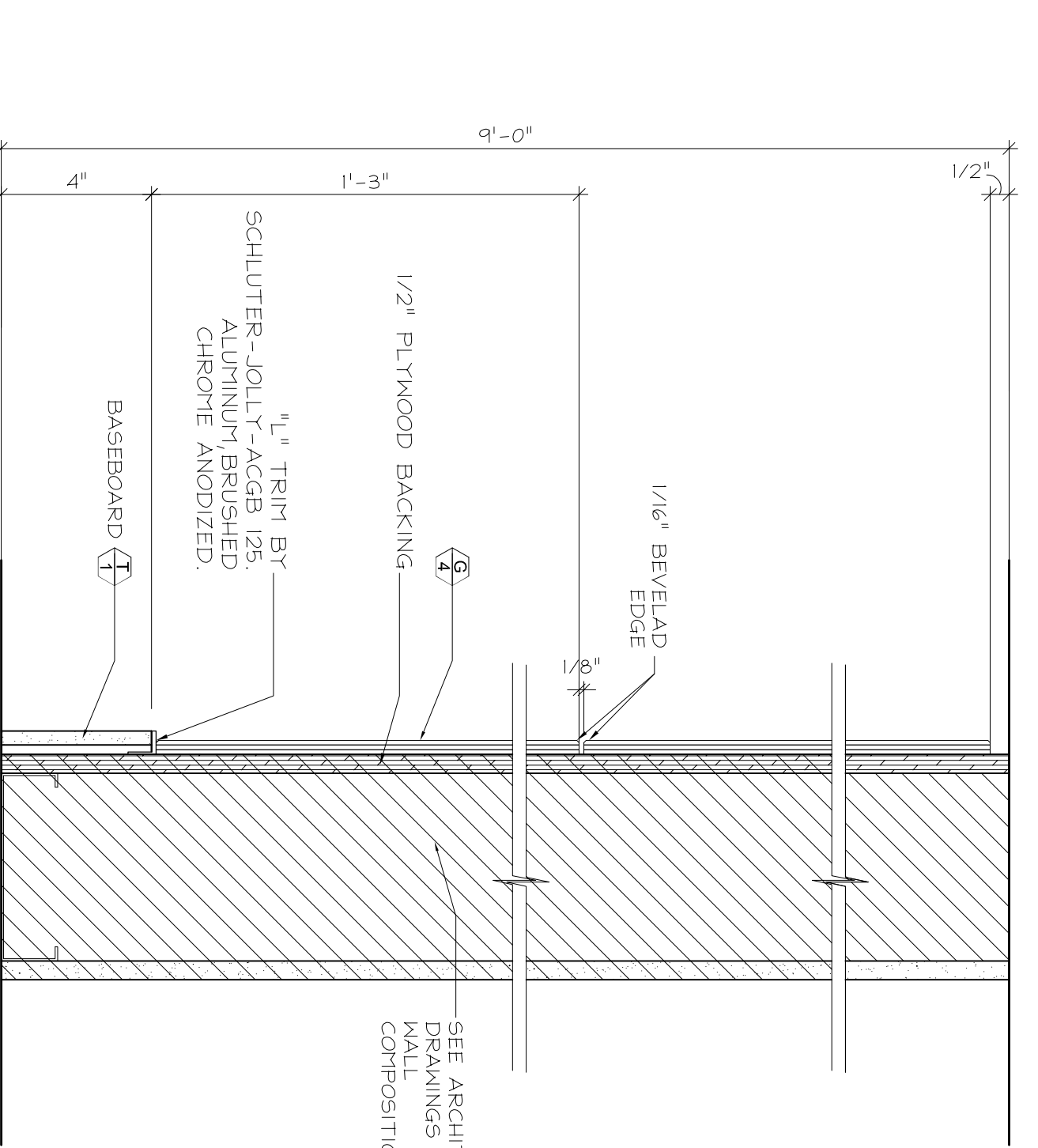
G CEILING DETAIL
1/8" = 1'-0"



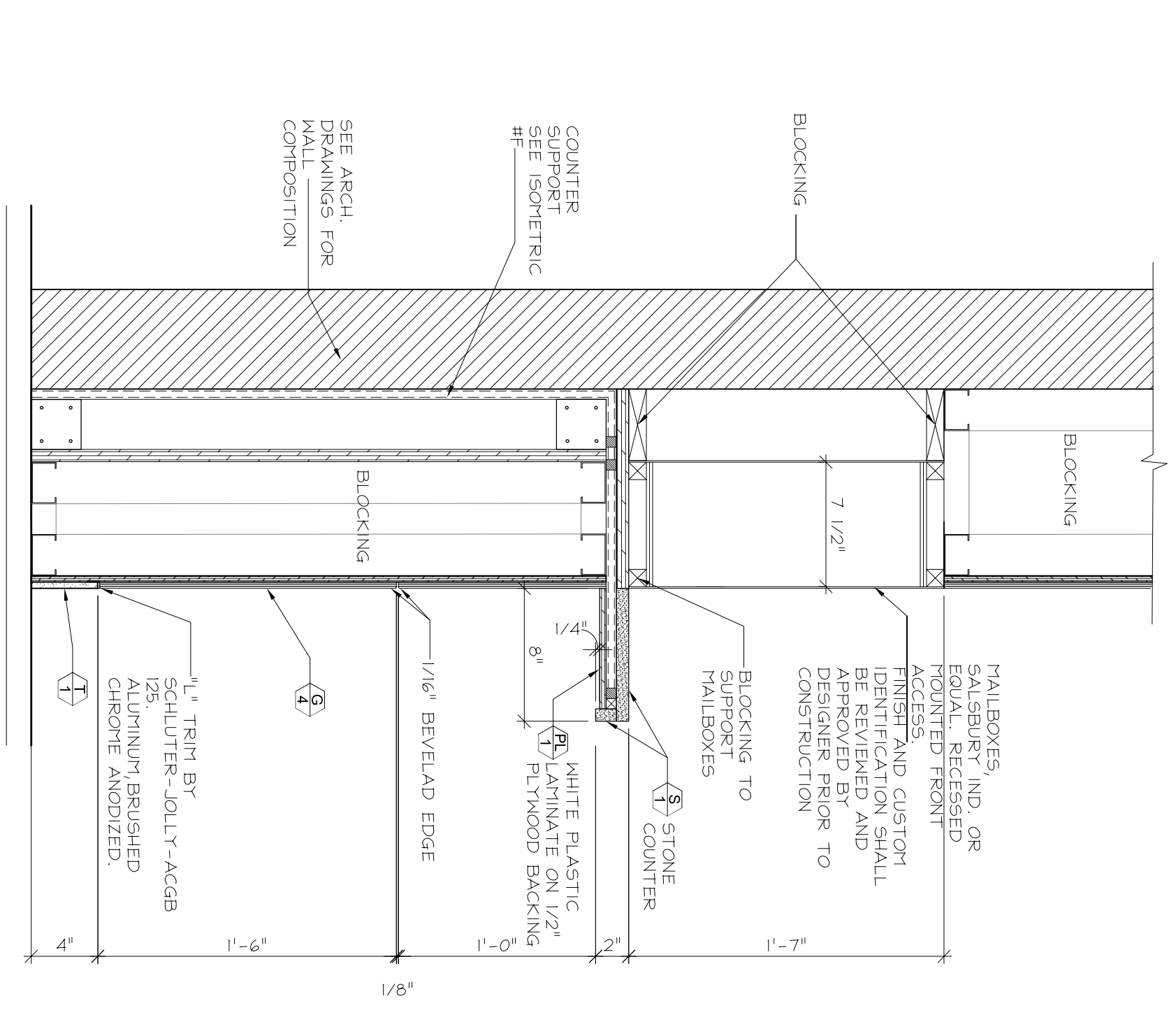
H CEILING DETAIL
1/8" = 1'-0"



J SECTION DETAIL
3/8" = 1'-0"



K SECTION DETAIL
3/8" = 1'-0"



L SECTION DETAIL
1/16" = 1'-0"

MALLEOX HARDWARE LEGEND

MALLEOXES BY SALESBURY INDUSTRIES
WWW.MALLEOX.COM

LOBBY BUILDING A:
BLANKETS - 1A, 201, 3A, 4A, 501

MALLEOX MODEL 3506 - 5 DOORS
WIDTH: 39-3/4" HEIGHT: 81" DEPTH: 1-1/2"

LOBBY BUILDING C:
BLANKETS - 1E, F, 204, 205, 3E, 4E, 4E, 504, 505

MALLEOX MODEL 3506 - 2, 3 DOORS
WIDTH: 39-3/4" HEIGHT: 81" DEPTH: 1-1/2"

LOBBY BUILDING B:
BLANKETS - 1B, 1C, 1D, 202, 203, 3C, 4C, 4C, 502, 503

MALLEOX MODEL 3506 - 4 DOORS
WIDTH: 39-3/4" HEIGHT: 81" DEPTH: 1-1/2"

LOBBY BUILDING D:
BLANKETS - 1G, 1H, 1I, 206, 207, 3F, 3F, 4F, 4F, 506, 507

MALLEOX MODEL 3506 - 2, 3 DOORS
WIDTH: 39-3/4" HEIGHT: 81" DEPTH: 1-1/2"

FACE SIDE BY SIDE THEREFORE TOTAL WIDTH = 79-1/2"

CONTRACTOR SHALL BE RESPONSIBLE FOR OBTAINING ALL NECESSARY PERMITS AND APPROVALS FROM THE LOCAL AND STATE AUTHORITIES. THE CONTRACTOR SHALL BE RESPONSIBLE FOR OBTAINING ALL NECESSARY PERMITS AND APPROVALS FROM THE LOCAL AND STATE AUTHORITIES. THE CONTRACTOR SHALL BE RESPONSIBLE FOR OBTAINING ALL NECESSARY PERMITS AND APPROVALS FROM THE LOCAL AND STATE AUTHORITIES.

ALL DOCUMENTATION ARE TO BE USED FOR DESIGN INTENT AND INFORMATION. PREPARED BY AEA MUST BE RECEIVED AND APPROVED BY ARCHITECT'S SIGNATURE.

No.	DATE	SUBMISSION	PAR. BY
09-30-05	ISSUED FOR COORDINATION	B2	EA

KARL FISCHER ARCHITECT
530 BROADWAY, 9TH FLOOR,
NEW YORK, NY 10012
TEL: (212) 219-9133

ADG WADSWORTH
411 HEMPSTEAD TURNPIKE SUITE 200
WEST HEMPSTEAD, NY 11552
TEL: (516) 565-5600
FAX: (516) 706-1132

WADSWORTH CONDOMINIUM
CARE OF LANGSAM
PROPERTY SERVICES
1601 BRONXVALE AVE.
BRONX, NY 10462
TEL: (718) 518-8000
FAX: (718) 518-8585

ANDRES ESCOBAR & ASSOCIATES
560 RUE ST PATRICK, BUREAU 400
MONTELEONE, NEW YORK, NY 10007
TEL: 516.272.2131
FAX: 516.272.2138
EMAIL: ANDRES@AESCA.COM

PROJECT/PRODUCT
WADSWORTH TERRACE
NEW YORK

LOBBY PLAN
REFLECTED CEILING PLAN & DETAILS

SCALE: 1/8" = 1'-0"

DATE: SEPT. 6, 2005

DESIGNER: VERIE PAK

BY: EA

PROJECT NO.: 009201

PRICE: D400